

EAST KENT FEDERATION

EAST KENT NEWS

JANUARY 2024



Contact Information for the Federation Office

Crown House,
John Roberts Business
Park,
Peas Hill,
Whitstable CT5 3BJ

Tel: 01227 464106

Email:
federation.secretary@eastkentfedwi.org.uk

Opening Hours:

Tuesday to Thursday,

9.30am – 3.00pm

(closed for lunch from
1.00pm to 1.30pm)

East Kent Federation
[Website](#)

[Ticketsource](#) for bookings



Word from the Chair

A Happy New Year to you all, I do hope you had a lovely Christmas and are now looking forward to many exciting things to enjoy with your WI and the Federation. I know our committees are working hard to organize different events they hope will interest you; there will be a Literary Lunch, the ever popular Spring Garden Day with great speakers, a craft day, a Kurling taster session, craft workshops, walks, not to mention our ACM in March when we will welcome Amanda Tooms as our main speaker.



'Who is Amanda Tooms?' I hear you say; well, she is a local Kent girl who has worked as a professional dancer in theatres, cruise ships, tv and films, set up her own successful dance school, gained a Masters degree in Professional Practice, Dance Technique Pedagogy and, if that were not enough, retrained as a Psychotherapeutic Counsellor and Hypnotherapist! Get your tickets and come along to hear her inspiring story.

It has been wonderful to see all the pictures of your WI Christmas celebrations, what a great time has been had by all with parties, games, entertainment and fabulous meals. We are so sorry that we cannot put them in the East Kent News, but we just don't have the space, the issue would end up with about 40 pages!!

By now, you will all have had an opportunity to look at the Resolutions, have you been able to decide which one you think is the best? I am finding it very difficult this time as they all have merits, but I must make a selection and send it to my WI secretary before the deadline. In April, NFWI will announce which resolution is to be discussed and voted on at the Annual Meeting at the Albert Hall on 5th June. If you would like to be a Delegate at that meeting, or attend as an Observer, there are still a few spaces left so please contact Alison – our Federation Secretary – to register your interest.

Carol

federation.chairman@eastkentfedwi.org.uk

The Winners of December 200+ Club draw

1st No 53	£20.50	Barry Woolgar
2nd No 127	£12.30	Susan Chase
3 rd No 11	£ 8. 20	Wendy Pitts – Upchurch WI

EKFWI ANNUAL COUNCIL MEETING
Tuesday 19th March 2024, 11.00 am – 4.00 pm
at the Leas Cliff Hall, Folkestone

Educator, Leader, Mentor and Therapist



Amanda has worked within the performing arts industry and education for most of her career. Leaving college at the age of 17, she spent the next 10+ years working on stage in the UK and overseas as a professional dancer. She has worked in a variety of theatres and performing arts venues as well as cruise ships, television, and film. In 1992 she opened her own very successful dance school and concentrated on teaching the next generation(s) of young dancers. In the 30+ years that followed, Amanda has taught children from pre-school age, through to full-time vocational and mature students.

Many of Amanda's students have graduated to incredible destinations including the Royal Ballet School, Elmhurst Ballet School, Sylvia Young Theatre School, and numerous post-16 vocational colleges. Her students have performed in West End Shows such as Billy Elliot, Matilda, Annie, Cats, Mary Poppins, Moulin Rouge, Kinky Boots, Priscilla, and many others. Amanda's greatest passion is choreography, and she has won numerous awards for her work. For many years she choreographed local professional pantomimes and has directed and choreographed shows and competition dances for 100's if not thousands of young dancers.

Amanda is no stranger to being a student herself, in 2015 she graduated from Middlesex University with a Masters Degree in Professional Practice, Dance Technique Pedagogy and in 2022, after retraining to what is now her 'new' career, she graduated as a fully qualified Psychotherapeutic Counsellor and Hypnotherapist.

Amanda believes that life balance can be achieved and that everyone deserves the support and opportunity to appreciate good mental, physical, and emotional health. Working full-time as a psychotherapist, counsellor, hypnotherapist, and specialist mentor, allows her to do what she loves most – supporting people through whatever might be getting in their way and holding them back!

Amanda's first love will always be dance and she continues to work with young dancers, in addition to her therapist work. She feels that the diversity that the performing arts industry offers to the world is incredibly special; it is a very open and accepting forum to be part of and she feels this has shaped her entire ethos and values in life, as well as enabling her to move forward and always believe that everything is achievable if you want it and work hard for it!

Observer Tickets are £16 per person (members only).

Booking forms are with WI Secretaries or from the Federation Office

Tel: 01227 464106 Email: federation.secretary@eastkentfedwi.org.uk

You can also book online at Ticketsource via

<https://www.ticketsource.co.uk/east-kent-federation-of-womens-institutes>

Treasurer's Chat

I am sitting writing this piece in the afternoon of 31 December. So far today we have had gale force winds, heavy downpours, icy rain/hail and yes, even a bit of sunshine. Before looking to the future I want to look back on 2023 - a year of change - but hopefully for the best.

We changed the way the 200 Club is run. Previously a member could pay to join at any point in the year. This created a lot of admin, so we agreed to fix the year it is now the same for everyone. Anyone starting during the year only pays for the remaining months, this means reminders are sent to everyone at the same time inviting them to continue.

We started a trial of the bookkeeping programme QuickBooks, it has proved a much more efficient way of invoicing and recording incoming payments. Thank you to all the treasurers who use online banking and reference the invoice number - QuickBooks links the two. This has saved so much time no longer trying to identify 'rogue' payments. It has been a learning curve but with each step we have improved the layout of invoices and learnt how to allocate payments to different events and committees. I'm sure you also appreciate the clearer layout of the invoices and receipts. Lin joined us in April, just as she learnt how we 'did things' in the office, we introduced new ways of working but she has embraced these changes. Lin and Alison compliment each other in the running of the office, we have a good team.

More and more transactions are being done via BACS, this enables both us, the Federation, and you, the WIs to keep track of your receipts and payments. Clear reference on bank statements rather than just a cheque number make it easier for the committee to see where and what funds are being used for.

As we move into the new year the Federation will be coming to the end of the year of free banking. One of the main charges will be 84p for each cheque banked and written. Therefore please try to avoid writing cheques for small amounts and if you are claiming expenses or refunds provide the Federation with your bank account details so that we can make a BACS transaction. I have heard that some of you are reluctant to give this information as it is private but it is printed on the cheques you write and give to strangers so why not share it with us? Payments are faster and safer.

I had expected to be able to share with you the timetable for payments of affiliation fees but this has not yet arrived from NFWI. Perhaps I had misheard but I am sure we were due to receive it by the end of the year. I do know that NFWI want affiliation fees sent to them very shortly after 1 April. I will pass on any information when it comes.

Thank you to all involved, not just the WI treasurers but also those who support them, it is team work. Wishing you all a very happy, productive and inspiring 2024 WI year.

Elizabeth

federation.treasurer@eastkentfedwi.org.uk

Dates for your diary

Friday 5 January 2024	Last date for applications for in person observer tickets NFWI Annual Meeting
Monday 3 February 2024	Show the Love Craft Workshops, EKFWI office
Tuesday 19 March 2024	EKFWI Annual Meeting, Leas Cliff Hall, Folkestone
Wednesday 10 April 2024	Spring Garden Day
Wednesday 17 April 2024	Literary Lunch - Lydden Village Hall
Thursday 25 April 2024	Resolution Meeting Godmersham Village Hall
Wednesday 13 November	Craft Day Date TBC

To book direct or to see if tickets are still available click on [Ticketsource](#) for most events.

Rose Bowl 2024

The Board of Trustees invites nominations from WIs for consideration for the Rose Bowl award

The Rose Bowl is awarded at the Annual Council Meeting to a WI member, members, or a committee who, in the opinion of the Board of Trustees, have given considerable service to the WI movement, or had a particular achievement that relates to the WI. The winner will be announced at the next Annual Council Meeting and will be invited to attend.

Please complete and return the slip below to: EKFWI, Crown House, John Roberts Business Park, Pean Hill, Whitstable, Kent CT5 3BJ by Friday 12th January 2024

**Annual Meeting To be held at The Leas Cliff Hall, Folkestone
Tuesday 19th March 2024**



Once again, we will welcome donations of 'Baskets' which will be sold at £10.00 each.

We are hoping that each WI will donate a basket filled with themed items of 'goodies' for gardening, cooking, craft, pampering, colour or in fact anything you feel someone would like to buy.

Deliver your Basket on the day; it does not matter if you come a little later as we need more baskets to replace the ones already sold.

EAST KENT FEDERATION ACHIEVER'S CUP



DOES SOMEONE IN YOUR WI DESERVE TO WIN THIS AWARD?

The Achiever's Cup is awarded to a member who has learnt a new skill during the past year, achieved something special or attained recognition for doing something unusual? *If so, tell us about it.*

The emphasis is on learning in the broadest sense (not just academic).

Achievements could include passing exams, winning medals

or creating a significant item or items.

The WI is an educational charity and learning has always been an important part of WI life. We look forward to hearing from you.

PHOTOGRAPHER

Unfortunately, the person who took the photographs last year is unable to join us this time, so we need a photographer for the Federation Annual meeting Tuesday 19 March.

We are looking for someone who can capture the atmosphere of the event.

If you are interested or would like more information please contact the EKFWI office
federation.secretary@eastkentfedwi.org.uk

FOOD GARDENING AND CREATIVE ARTS

Adult Learners week is back after a long time on the shelf due to the great pause.

This year the first prize will be a £25 voucher. This prize comes from a donation of £75 from Etchinghill Guild which closed. The theme is learning a skill to create an item that is useful to others. Hats scarves and mittens/ gloves sets are the order of the day learn a new pattern, try a new way, anything that achieves a beautiful but welcome gift for someone. All items will be donated to various charities so please be aware that no items will be returned. Items for consideration need to be in the office by the 1st September 2024 .

Save the dates

Spring garden day is booked for 10th April tickets will be available in the new year. We have Steve Edney and the Wonkey Parsnip Lady as morning speakers with Jo Taylor as your flower demonstrator.

There will be stalls and time for lunch and this year we will be holding the Guilds Challenge cup so plenty to see and do please support this popular event with a twist.

We have been asked to rerun craft day at Chartham for 2024 and we have a provisional date of Wednesday 13 November. We already have tutors who are offering Christmas crafts once the hall is booked and confirmed we will get this in your calendars.

We are also in the early stages of planning **craft days at Pean Hill** (EKFWI office) hopefully the first will be a machine sewing day making fabric boxes and bags there is also a box making workshop in the offering more details in the new year .

SHOW THE LOVE IN SUPPORT OF THE CLIMATE COALITIONS AIM TO TACKLE CLIMATE CHANGE AND PROTECT NATURE

Food Gardening and Creative Arts and Public Affairs Committees are holding workshops at the Federation Office
Crown House, John Roberts Business Park, Pean Hill,
Whitstable CT5 3BJ



February 5th 2024
Session 1 - 10.00 - 12.00
Session 2 - 13.00 - 15.00
(Each session will be identical)

£8.00 per session

There will be a limit of 10 attendees for each session

Green Button pictures, green heart cards, green heart brooches.
(Maybe you can see a theme here?)

Booking via Ticket source

All materials supplied but please bring your own scissors.

Tea and coffee will be available
Please note there is no lift, access is via stairs

Craft and Home Economics Guild Challenge Cup 2024

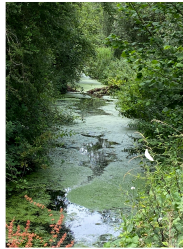
Calling all members of our wonderful guilds these are special to East Kent and we need to preserve them.

Details of their events are usually in the East Kent news and any paid up member of the WI can attend their events for a fee on the door.

In 2024 the Challenge cup is returning and entries are invited from all guild members.
Guild leaders will be informed of the final details.

The title is "A journey" any medium not to exceed 2'x2'x2' there is no limit to items put forward for judging however each guild has the right to do their own selection process first. Judging will take place at Spring Garden Day 10th April 2024 items will be passed by a qualified craft judge to ensure they adhere to the schedule but final judging will be carried out by the victors . So get thinking and we look forward to seeing your journey.

PUBLIC AFFAIRS COMMITTEE



The Good, The Bad, The Ugly of East Kent Rivers and Waterways

The competition will run until January 31st when 3 finalists will be selected for display and judging at the 2024 ACM at Folkestone.

A cup will be awarded to the winner.

1. The photos must be the members own work and should not be coastal views.
 2. Each entry should be 3 photographs one for Good, one for Bad and one for Ugly
 3. They should be mounted as a set of 3.
 4. Entries must be received at the Federation office no later than January 31st.
- Any queries email Sue Hankins at sfh.publicaffairs@gmail.com or via Federation Office

MEMBERS ADVISORY COMMITTEE

Happy New Year from all the Advisers.

Should your WI need assistance at your upcoming Annual Meeting, please email the Federation Office as soon as possible with your request.

The all-new Treasurers Guideline has been completed and will be shortly emailed to WI Officers. It is a large document and should always be read online if it is possible. However, if you wish to print a single copy for your WI to use, a print cartridge is an allowable expense to be claimed from your WI, provided that it has already been discussed by the committee. Should you have any questions, please once again, contact the Federation Office.

NEWS FROM THE NFWI PUBLIC AFFAIRS TEAM

Get involved in our climate change campaign this spring

2024 will be an important year for climate in a critical decade for the planet. As we head towards a general election, it must be a year for action. NFWI and The Climate Coalition is urging politicians to listen to the British public, and to engage in constructive conversation about how to address the crises we all face in a fair and effective way.

Through a series of key moments during 2024, including Show the Love and Great Big Green Week, we will be calling for fair and effective action to meet or exceed the UK's targets in the Climate Change Act, and our international commitments.

December – February: Sign up to the Community Open Letter to party leaders

The first key moment of 2024 is The Climate Coalition's [open letter for community groups](#) that calls on party leaders to commit to conversations with the UK public on how they plan to meet our national and international commitments to tackle the climate and nature crises. The scale of this crisis is too important for division and delay. We need urgent action.

We are encouraging WIs and federations to [add your community's voice to the letter](#) and demonstrate the public mandate for action from all corners of the UK. The letter will be shared with party leaders in spring 2024, and it is important that they hear from a diverse range of people from all walks of life.

The open letter sets out a vision for the world that we want to live in - where children breathe clean air, where wildlife is thriving, where our homes are powered by renewable energy, and where communities have adequate resources to rebuild their lives after extreme weather events.

Reporting resolution selections

All WI campaigns come from resolutions submitted, debated and voted on by our members. Between November and early February, all members have the opportunity to cast their selection for the resolution they support the most.

This year's shortlist and supporting documents can be found here: <https://mywi.thewi.org.uk/public-affairs-and-campaigns/news-and-actions/resolution-shortlist-2023-24>

The deadline for members' resolution slips to arrive with federations is **11 February 2024**.

The slip can be found in the November/December 2023 issue of WI Life. Alternatively, a digital copy can be downloaded from MyWI.

The deadline for federations to return tallied selection results to the NFWI Public Affairs Department is 18 February 2024.

Federations are not required to verify selections received from WIs by checking forms for signatures, or by only accepting the original forms from WI Life.

Selections can be accepted by federations in a variety of ways – this is not limited to the selection form in WI Life. In addition to completing the selection slip in WI Life and posting it to their federation, WIs can:

- allow members to submit their selections directly to the WI secretary via email or telephone;
- conduct an anonymous poll at a WI meeting; or
- collect selections using electronic tools, such as via email or using a survey tool like SurveyMonkey.

If you have any questions about the resolutions process or campaigns, please get in touch with the Public Affairs Department via email (pa@nfwl.org.uk) or phone (020 7371 9300 ext. 2002).

News from around the Federation

St Peter's Village WI

Our WI ladies are busy knitting jumpers for new born babies in Africa. When born the babies are wrapped up in newspaper as the mothers have no clothes for them



as they are poor. These babies are called fish and chip babies as we used to have our chips wrapped in news paper years ago. Jane Welch, one of our members supplied the patterns asking that darkish colours be used.

Please see photo of examples knitted by one member of our St Peter's Village WI but, of course, we have many others knitted by many of our industrious ladies.

4th December **Rodmersham Green WI** hosted a carol service held in Rodmersham Church, some members from other local WI's attended. £94 was raised, which will be split between Rodmersham Church and the local food bank which we support each month.

7th December we had our Christmas lunch in the village pub, the Fruiterers Arms.

Brenzett & district have a group called 'Strutt and Stroll' which covers both the energetic walkers and the leisurely pacers. They set off on a November day and walked along The Royal Military canal path in Hythe



and then on to the seafront. A stop at a restaurant for morning coffee and a good chat was enjoyed particularly as they were so fortunate with the weather and managed to stay outside.

East Kent Federation Annual Meeting	Tuesday 19 March 2024	Leas Cliff Hall, Folkestone	WI secretaries have received full information.
	Delegate tickets	£0	One delegate per WI chosen from membership
	Non voting member tickets	£16	Open to all EKFWI members
NFWI Annual Meeting	Wednesday 5 June 2024	Royal Albert Hall	WI secretaries have received information.
	Delegate tickets	£0 Travel to London on federation coach - no cost.	Allocation of 1 delegate per 4 WIs (25 EKFWI) All members may put their names forward to EKFWI to be a delegate. Those chosen will need to report back to the Wis they are representing.
	Observer Tickets	£28 plus £16 for coach travel if space available. Last day to apply for tickets Friday 5 January 2024.	Open to all members on first come first serve basis. Travel may be possible if space is available on coach.

ENVIRONMENT & NATURAL HISTORY GROUP

We are well advanced in planning our Programme for 2024. Visits include all parts of our East Kent area, from Kingsdown to Canterbury, Bilsington to Richborough. Membership costs £5.00 per year, friends & family are welcome, at a charge of £1.50 per visit. Full details at the Annual Council Meeting in March, or from the Hon Secretary Janet Adamson [0 1 3 0 4 7 8 4 2 6 7](tel:01304784267) or email: janet.a.adamson@btinternet.com

CRAFT & HOME ECONOMICS GUILD IN DOVER (WHITFIELD)

Meetings 4th Wednesday in the month 2pm.

January 24th	No speaker . Social time Any Xmas gifts you want to donate for the Bring and Buy
February 28th	Bev Williams Talking on the Tapestries at Kernsey Abbey in the Tea Rooms
March 27th	Craft Demonstrations & Displays by members
April 24th	Alison Shopland Member from Whitfield Evening WI, Her years Performing Tap
May 22nd	Frances Smith Her Trip to Nepal
June 26th	Christine Duchemin Talking on her career as a Nurse, Midwife and working in the Army.
July 24th	Jan Taylor, one of our own members 'Can you hear me?'
August 28th	Summer Tea - no speaker
September 25th	Gill Rowland A Cruse Volunteer Supporting people through grief and loss
October 23rd	Hayley from Hayley's Bloomers Demonstrates an Autumn Wreath and maybe something else
November 27th	It's our Annual Meeting plus our birthday meeting so no speaker
December	Tea/dinner date TBA

ANY SUGGESTIONS FOR SPEAKERS ARE WELCOME.

NEWS FROM OUR GUILDS

GUILD & GROUP MEETINGS

SHEPPEY CRAFT & HOME ECONOMICS GUILD

Meet at 2.15pm on the fourth Thursday of the month at The Bethel Church Hall, Chapel Street, Minster on Sea, Sheerness ME12 3QF. Contact their Secretary, Valerie Chatten on 01795 874634 for further details.

LACEMAKERS GUILD – We are a small group of enthusiastic lace makers, who meet monthly, at The Clock Tower Café, Tyler Hill Road, Blean. We would love for some new members to join us. We are happy to help beginners and we have various pillows, bobbins, books and threads to get you on your lacemaking way. Our meeting is on the third Tuesday from 10 am to 1 pm. .

NEEDLECRAFT GUILD – The Needlecraft Guild welcomes all WI members who are interested in any form of needlecraft. They meet on the fourth Wednesday of the month (except December) at Chartham Hatch Village Hall, Bigbury Road, Chartham Hatch, Canterbury, Kent CT4 7NH between 10.30am and 2.30pm. New members are always welcome to this friendly, creative group. To find out how to join, please contact the Federation office.

SPINNERS – The Spinners Guild meet in Chartham Village Hall, Station Road, Chartham, Kent CT4 7JA on the first Monday of every month, unless it is a Bank Holiday, in which case the meeting takes place on the second Monday. The meetings start at 10.30am and end at 2.30pm. It's a friendly & lively group and, in addition to spinning, they have workshops on knitting, felting, weaving, button making - pretty much anything woolly! New members are always welcome and are put under the wing of experienced spinners to learn about the craft.

DEAL & SANDWICH GUILD

Deal and Sandwich Guild meet on the third Monday at the Guildhall, Sandwich, 2 - 4pm.

January 15th
'Gift Wrapping through the year'